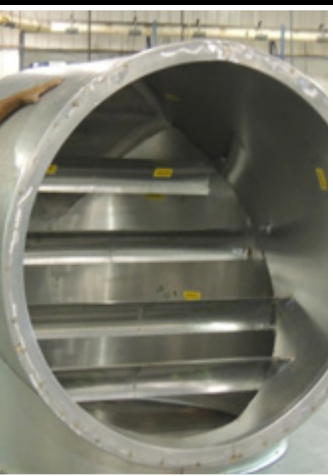


Link Industries

Your Source for Lindab Products





Linx Industries, Inc. is an American-based manufacturing company which develops, manufactures, and markets sheet metal products and system solutions for the HVAC industry. As a division of DMI Companies, Linx's mission is to become North America's preferred air solution's provider.

Portsmouth, Virginia serves as Linx Industries' manufacturing center and North American headquarters. Products are distributed to the market through a network of trusted representatives.



As a yellow label union manufacturer of spiral duct and fittings, Linx is a proud partner of the Sheet Metal Worker's International Association (SMWIA).

Product Options

Linx Industries can help you customize your order to suit your project needs. We offer special materials, coatings, shipping options and accessories.

- Aluminum, Aluminized
- Stainless Steel
- Galvanneal, Galvalume
- Clean and Capping Options
- Epoxy Coated Systems
- Architectural Color Options
- Antimicrobial Single & Double Wall
- Manifolding Options

Support Options

Linx delivers support you can count on; service that others may not provide. You can rely on our experienced staff members for a number of tasks.

- In-house Estimating Services
- Project Management Department
- Installation Drawings
- Quick Ship Programs: Next, 3, or 6 day
- Online Submittals
- Special Packaging/Racking
- Customer Display Center
- Product Training

www.LI-HVAC.com

24/7 access to literature and product info

linxTrak

Receive email notifications of shipment and review orders online

Pricing Software

PC-based estimating program



Linx Self-Sealing Product feat. Lindab Safe®

Lindab Safe® ductwork products offer the following superior features and benefits:

- Complete line of spiral duct and fittings from 3"- 60" diameter
- Factory installed double-lipped self-sealing gasket on all fittings
- Manufactured to strict published manufacturing tolerances
- Built in accordance with 2005 SMACNA HVAC Duct Construction Standards for +10" WG
- Gasket material UL classified (ASTM Std. E84-91a): Flame spread: 0, Smoke developed: 5
- Fast and easy installation
- May be installed in all weather conditions; temperature rated for -20 °F to +212 °F
- Meets SMACNA Leakage Class 3 performance
- Adjustability – fittings can be rotated 360° during installation
- Green – no VOC off gassing
- Rolled edges on fittings and corrugations on duct add strength and reduce risk of injury
- Leading Edge
- Mechanically-formed seam lock prevents spiral seam slippage



Lindab Safe® Double Wall Round

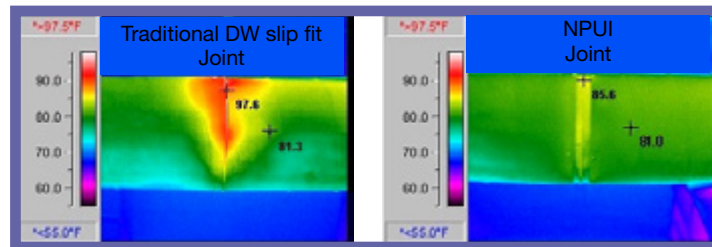
Lindab Safe® Double Wall is a patented internally insulated self-sealing duct system that delivers high quality acoustical and thermal performance. Available in 1" and 2" insulation thickness and up to 60" o.d.



- Single slip connection - - double wall that installs like single wall ...
30-50% less time than traditional slip fit connection
- Fiber retention system prevents fiberglass erosion while maintaining acoustical performance
- Rolled edges on fittings and corrugations on duct add strength and reduce the risk of injury
- Meets SMACNA Leakage Class 3 performance and built in accordance with 2005 SMACNA HVAC Duct Construction Standards for +10" WG
- Leading Edge eliminates the need for expensive flanges for diameters over 26" while maintaining system flexibility

Thermal Performance

Traditional slip vs Linx self-sealing, single slip double wall



Flat Oval Single Wall & Double Wall

Linx Flat Oval combines the space savings of rectangular with the performance benefits of round ductwork.

Flat Oval is offered in both single wall and double wall construction and in a wide range of sizes.



Industrial Solutions

Linx's industrial specialists are available to help you provide the right industrial system for your project.

Built in accordance with SMACNA's Round Industrial Duct Construction Standards, for system pressures ranging from -30 to +50 iwg.

- Heavy Gauge Construction
- Longitudinally-welded Duct

- Coatings Available
 - Corrosion Resistance
 - Antimicrobial Applications

- Materials or construction
 - Galvanized Steel
 - Aluminized Steel
 - Epoxy and PVC Coated Steel
 - Type 3003 Aluminum
 - High-temp Silicone Gasket Connection



- Black Iron
- Paint-grip Galvanized
- Antimicrobial Coated Steel and/or Fabric (DW only)
- Type 304 and 316 Stainless Steel

Dust Collection

Linx Industries' dust collection duct system is suitable for:

- Particle transportation from woodworking, such as saw mills, carpenters, & craft workshops
- Comfort Ventilation
- Plasma Cutters
- Specially designed ventilation plants where you have extra demands for form, color and appearance
- Joined easily with a gasketed tension clamp
- Available in diameters 3"-20"
- System accessories include blast gates and floorsweeps



Comfort

Sound Attenuation

- Round Silencers: designed with a spiral seam outer shell, inner perforated shell, and inorganic glass fiber sound absorption material.
- Rectangular silencers: manufactured with a galvanized frame and baffles made with Lindtec™, a sound absorption material. The SLRS has a low pressure loss and a low generation of flow noise.



Air Distribution

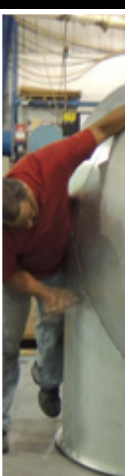
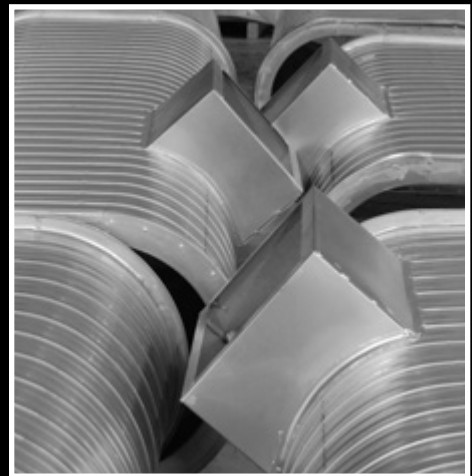
- Registers: The RGS-3 is a supply/return register with adjustable double deflection blades and a volume damper designed specifically for direct mounting on a spiral duct.
- Drum louvers: The DRLAA supply drum louver has adjustable air flow patterns in both the horizontal and vertical planes for maximum versatility.
- Diffusers: Versio ceiling diffusers are square and have magnetic faceplates allowing for easy inspection and cleaning. Forno mixed ventilation diffusers are offered in round or square designs and have interchangeable faceplates.
- Ventiduct: Ventiduct is an air distribution system consisting of spiral ducts enhanced by a number of small nozzles carefully placed into the duct wall. VSR can be ordered with various nozzle patterns for specific demands.



Energy Efficiency

- Chilled beams: Radiant/Convection beams are designed with the sole purpose of ensuring a pleasant and comfortable indoor climate. Simple and discrete designs allow for flexible integration in virtually all suspended ceiling solutions.





linx Industries

Linx Industries, Inc. · 2600 Airline Boulevard · Portsmouth, Virginia 23701
Tel: (757) 488.1144/(800) 797.7476 · Fax: (757) 488.4502